

出让土地平面界址图

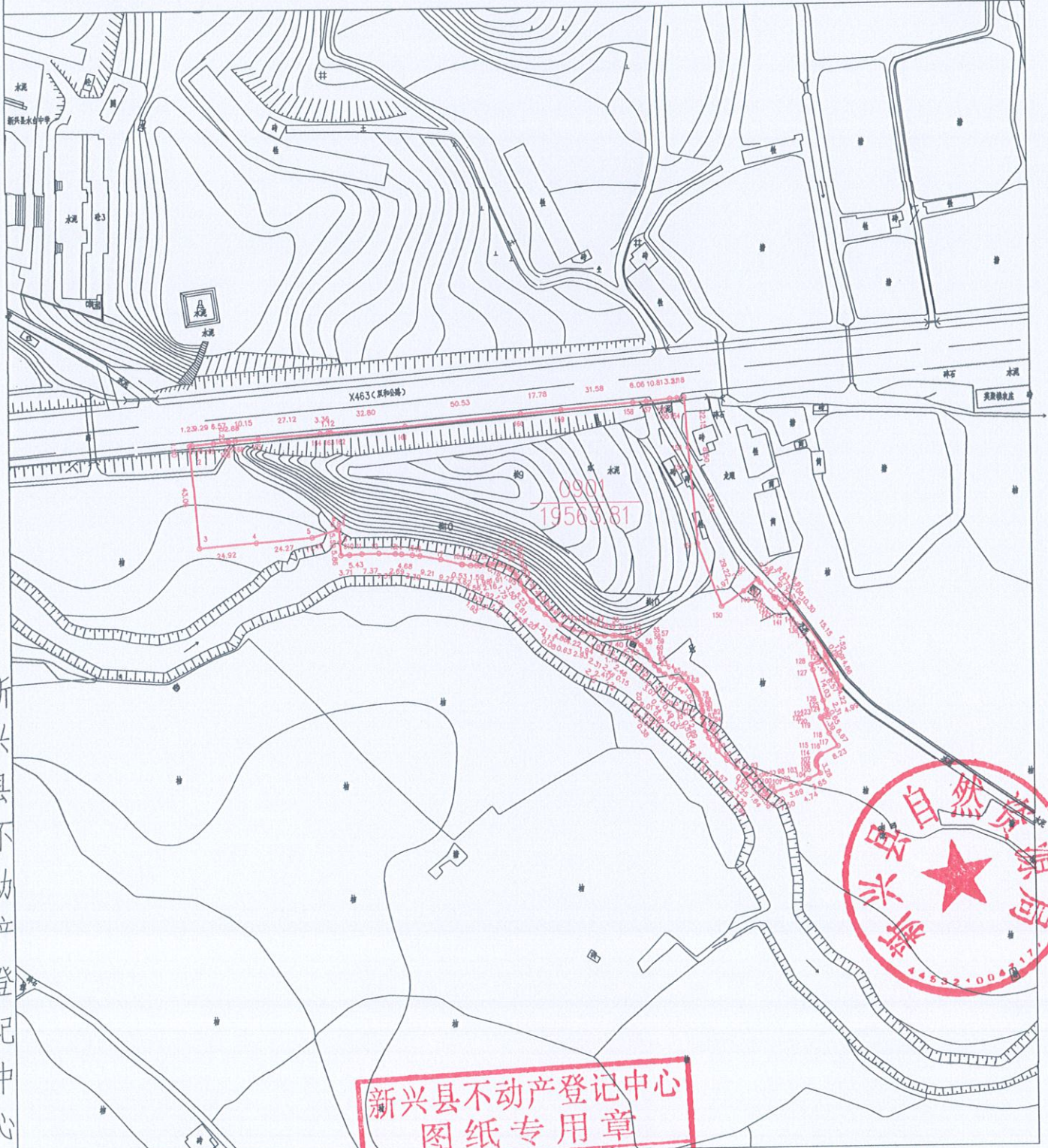
单位: m.m²

宗地代码: 445321006002GB00035

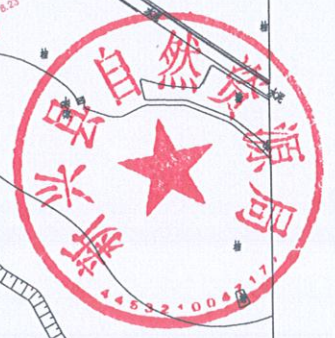
权利人: 新兴县人民政府

所在图幅号: 2502.25-37651.50

北



新兴县不动产登记中心



新兴县不动产登记中心
图纸专用章
资质等级 乙级 质编号 44510707

国家大地2000坐标系
1985国家高程基准
2007年版样式
2026年4月数字测制

制图者: 罗家顺
审核者: 吴嘉威

界址点坐标表

点号	X	Y	边长
1	2502371.237	37651378.090	1.90
2	2502369.341	37651378.254	43.06
3	2502326.441	37651381.962	24.92
4	2502328.587	37651406.788	24.27
5	2502330.676	37651430.967	11.49
6	2502334.053	37651441.952	0.84
7	2502334.074	37651442.796	5.50
8	2502328.593	37651443.208	5.86
9	2502322.749	37651443.646	3.71
10	2502322.940	37651447.350	5.43
11	2502323.282	37651452.769	7.37
12	2502323.426	37651460.136	7.37
13	2502323.181	37651467.498	2.69
14	2502322.949	37651470.178	4.68
15	2502322.546	37651474.840	3.39
16	2502322.108	37651478.205	9.21
17	2502320.482	37651487.268	9.22
18	2502318.215	37651496.206	0.53
19	2502318.145	37651496.727	3.62
20	2502317.662	37651500.316	

界址点坐标表

点号	X	Y	边长
20	2502317.662	37651500.316	2.56
21	2502317.635	37651502.871	1.59
22	2502317.617	37651504.462	1.98
23	2502317.838	37651506.433	2.16
24	2502318.079	37651508.583	1.91
25	2502318.278	37651510.481	1.91
26	2502318.139	37651512.384	1.92
27	2502317.667	37651514.241	1.93
28	2502316.873	37651516.001	0.16
29	2502316.794	37651516.139	1.95
30	2502315.700	37651517.755	1.95
31	2502314.347	37651519.161	1.95
32	2502312.774	37651520.317	1.95
33	2502311.029	37651521.190	1.75
34	2502309.456	37651521.946	3.50
35	2502306.304	37651523.463	5.23
36	2502301.952	37651526.369	0.61
37	2502301.495	37651526.766	3.62
38	2502298.764	37651529.140	4.20
39	2502295.925	37651532.233	

界址点坐标表

点号	X	Y	边长
39	2502295.925	37651532.233	4.21
40	2502293.444	37651535.636	4.13
41	2502291.403	37651539.227	0.08
42	2502291.363	37651539.298	4.86
43	2502289.420	37651543.754	0.63
44	2502289.227	37651544.352	4.22
45	2502287.928	37651548.369	2.93
46	2502287.304	37651551.233	1.94
47	2502286.891	37651553.126	4.87
48	2502286.327	37651557.962	3.72
49	2502286.261	37651561.679	1.15
50	2502286.241	37651562.830	2.40
51	2502286.153	37651565.233	2.41
52	2502285.659	37651567.595	2.43
53	2502284.772	37651569.856	2.31
54	2502284.696	37651569.981	0.15
55	2502283.511	37651571.963	2.46
56	2502283.434	37651572.092	2.46
57	2502281.846	37651573.971	
58	2502279.974	37651575.568	

界址点坐标表

点号	X	Y	边长
58	2502279.974	37651575.568	2.45
59	2502277.874	37651576.835	1.22
60	2502276.818	37651577.453	1.64
61	2502275.405	37651578.286	3.15
62	2502272.947	37651580.263	3.10
63	2502270.840	37651582.538	3.07
64	2502269.113	37651585.073	3.12
65	2502267.764	37651587.883	3.10
66	2502266.854	37651590.851	2.01
67	2502266.314	37651592.785	2.01
68	2502265.462	37651594.606	2.03
69	2502264.315	37651596.283	0.97
70	2502263.649	37651596.987	0.06
71	2502263.608	37651597.027	1.03
72	2502262.900	37651597.774	0.82
73	2502262.249	37651598.275	0.44
74	2502261.923	37651598.574	0.44
75	2502261.551	37651598.812	0.38
76	2502261.253	37651599.042	0.49
77	2502260.821	37651599.280	


 新兴县不动产登记中心
 图 纸 专 用 章
 资质等级 乙级
 资质编号


 自然资源局
 321004711

界址点坐标表

点号	X	Y	边长
77	2502260.821	37651599.280	
78	2502259.960	37651599.832	1.02
79	2502257.810	37651600.732	2.33
80	2502255.537	37651601.250	2.33
81	2502253.210	37651601.368	2.33
82	2502252.188	37651601.354	1.02
83	2502249.878	37651601.473	2.31
84	2502247.589	37651601.808	2.31
85	2502247.094	37651601.941	0.51
86	2502244.205	37651602.717	2.99
87	2502241.023	37651604.068	3.46
88	2502238.041	37651605.863	3.48
89	2502235.347	37651608.050	3.47
90	2502231.397	37651612.076	5.64
91	2502227.849	37651616.368	5.57
92	2502225.040	37651620.425	4.93
93	2502224.662	37651620.972	0.66
94	2502224.072	37651621.866	1.07
95	2502222.091	37651624.441	3.25
96	2502219.815	37651626.802	3.28

界址点坐标表

点号	X	Y	边长
96	2502219.815	37651626.802	
97	2502217.520	37651628.705	2.98
98	2502217.303	37651628.885	0.28
99	2502215.945	37651629.811	1.64
100	2502215.483	37651630.126	0.56
101	2502217.228	37651632.927	3.30
102	2502219.489	37651640.080	7.50
103	2502220.583	37651643.600	3.69
104	2502222.630	37651647.872	4.74
105	2502225.069	37651652.966	5.65
106	2502228.033	37651651.562	3.28
107	2502228.619	37651651.338	0.63
108	2502229.234	37651651.209	0.63
109	2502229.861	37651651.178	0.63
110	2502230.485	37651651.245	0.66
111	2502231.125	37651651.421	0.66
112	2502231.724	37651651.687	0.63
113	2502232.247	37651652.030	0.62
114	2502232.702	37651652.448	0.61
115	2502233.077	37651652.930	

界址点坐标表

点号	X	Y	边长
115	2502233.077	37651652.930	
116	2502233.361	37651653.463	0.60
117	2502236.887	37651660.904	8.23
118	2502242.345	37651657.074	6.67
119	2502248.877	37651653.628	7.39
120	2502249.455	37651653.323	0.65
121	2502250.005	37651655.094	1.85
122	2502250.066	37651655.289	0.20
123	2502250.500	37651656.683	1.46
124	2502252.703	37651655.973	2.31
125	2502256.716	37651654.681	4.22
126	2502270.071	37651650.377	14.03
127	2502272.415	37651649.622	2.46
128	2502274.483	37651654.162	4.99
129	2502268.341	37651658.408	7.47
130	2502263.070	37651662.334	6.57
131	2502262.586	37651662.695	0.60
132	2502262.353	37651662.893	0.31
133	2502275.596	37651656.617	14.68
134	2502276.579	37651656.151	1.09

界址点坐标表

点号	X	Y	边长
134	2502276.579	37651656.151	
135	2502276.652	37651656.116	0.08
136	2502278.170	37651655.985	1.52
137	2502290.659	37651647.414	15.15
138	2502298.768	37651641.063	10.30
139	2502299.408	37651641.553	0.81
140	2502299.160	37651640.785	0.81
141	2502297.601	37651638.186	3.03
142	2502297.354	37651637.774	0.48
143	2502298.899	37651636.413	2.06
144	2502301.613	37651634.031	3.61
145	2502302.180	37651633.533	0.75
146	2502308.515	37651627.973	8.43
147	2502309.989	37651626.663	1.97
148	2502310.200	37651626.476	0.28
149	2502305.017	37651620.576	7.85
150	2502298.418	37651610.590	11.97
151	2502325.822	37651600.457	29.22
152	2502359.387	37651597.577	33.69
153	2502367.852	37651596.850	8.50



界址点坐标表

点号	X	Y	边长
153	2502367.852	37651596.850	
154	2502389.918	37651594.957	22.15
155	2502389.592	37651591.791	3.18
156	2502389.321	37651588.595	3.21
157	2502388.407	37651577.826	10.81
158	2502387.895	37651571.792	6.06
159	2502385.226	37651540.329	31.58
160	2502383.539	37651522.631	17.78
161	2502378.744	37651472.331	50.53
162	2502376.300	37651439.627	32.80
163	2502376.217	37651438.509	1.12
164	2502375.966	37651435.157	3.36
165	2502373.944	37651408.108	27.12
166	2502373.188	37651397.983	10.15
167	2502372.976	37651395.109	2.88
168	2502372.772	37651395.117	0.20
169	2502372.180	37651388.572	6.57
170	2502371.347	37651379.318	9.29
	2502371.237	37651378.090	1.23

新兴县不动产登记中心
S=19563.81 平方米合29.35亩

资质证书
等级 乙级
资质证书
编号 44510707

