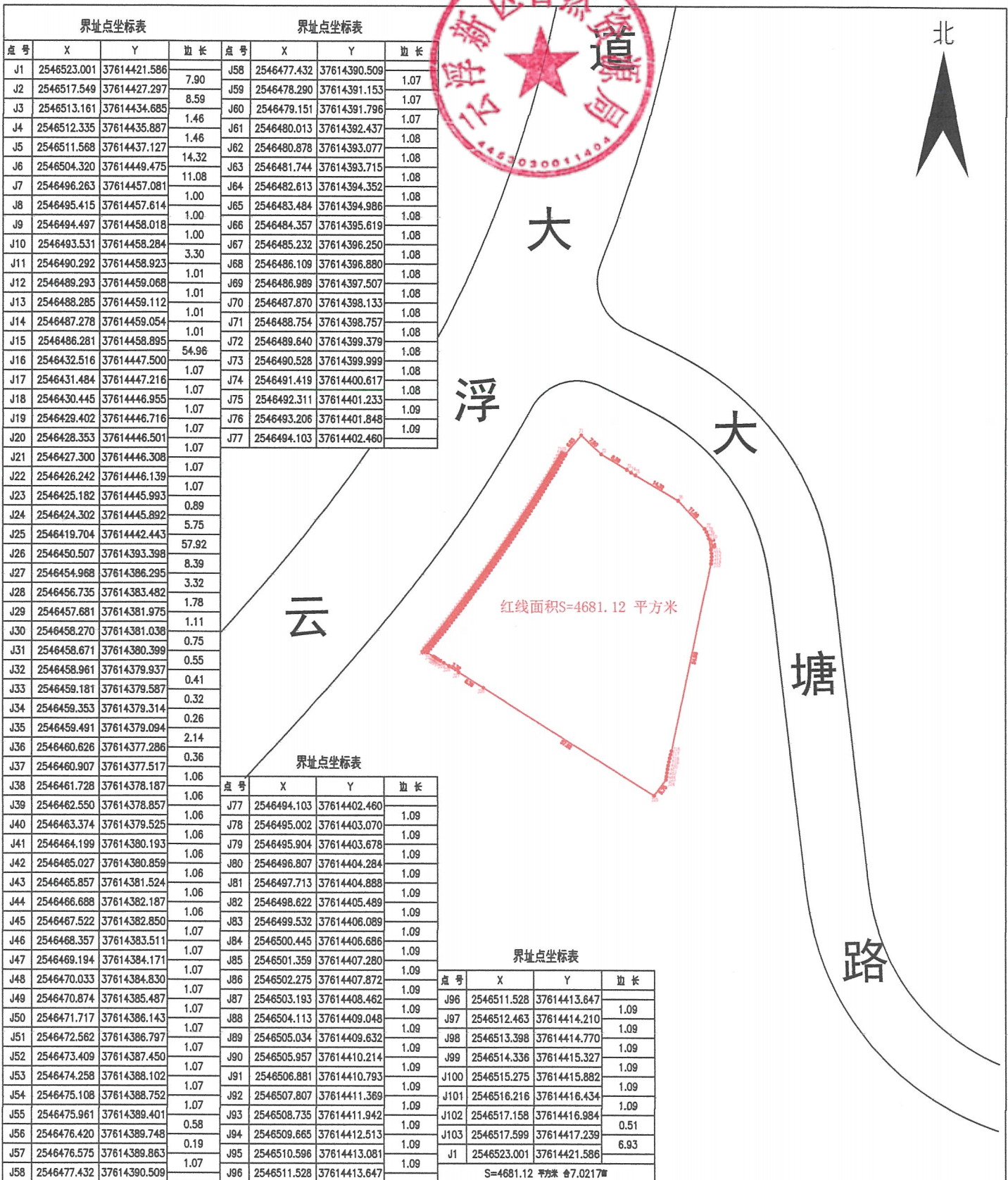


云浮西江新城商务以北片区XJB-07-22号地块宗地图



界址点坐标表

点号	X	Y	边长
J1	2546523.001	37614421.586	7.90
J2	2546517.549	37614427.297	8.59
J3	2546513.161	37614434.685	1.46
J4	2546512.335	37614435.887	1.46
J5	2546511.568	37614437.127	14.32
J6	2546504.320	37614449.475	11.08
J7	2546496.263	37614457.081	1.00
J8	2546495.415	37614457.614	1.00
J9	2546494.497	37614458.018	1.00
J10	2546493.531	37614458.284	3.30
J11	2546490.292	37614458.923	1.01
J12	2546489.293	37614459.068	1.01
J13	2546488.285	37614459.112	1.01
J14	2546487.278	37614459.054	1.01
J15	2546486.281	37614458.895	54.96
J16	2546432.516	37614447.500	1.07
J17	2546431.484	37614447.216	1.07
J18	2546430.445	37614446.955	1.07
J19	2546429.402	37614446.716	1.07
J20	2546428.353	37614446.501	1.07
J21	2546427.300	37614446.306	1.07
J22	2546426.242	37614446.139	1.07
J23	2546425.182	37614445.993	0.89
J24	2546424.302	37614445.892	5.75
J25	2546419.704	37614442.443	57.92
J26	2546450.507	37614393.398	8.39
J27	2546454.968	37614386.295	3.32
J28	2546456.735	37614383.482	1.78
J29	2546457.681	37614381.975	1.11
J30	2546458.270	37614381.038	0.75
J31	2546458.671	37614380.399	0.55
J32	2546458.961	37614379.937	0.41
J33	2546459.181	37614379.587	0.32
J34	2546459.353	37614379.314	0.26
J35	2546459.491	37614379.094	2.14
J36	2546460.626	37614377.286	0.36
J37	2546460.907	37614377.517	1.06
J38	2546461.728	37614378.187	1.06
J39	2546462.550	37614378.857	1.06
J40	2546463.374	37614379.525	1.06
J41	2546464.199	37614380.193	1.06
J42	2546465.027	37614380.859	1.06
J43	2546465.857	37614381.524	1.06
J44	2546466.688	37614382.187	1.06
J45	2546467.522	37614382.850	1.07
J46	2546468.357	37614383.511	1.07
J47	2546469.194	37614384.171	1.07
J48	2546470.033	37614384.830	1.07
J49	2546470.874	37614385.487	1.07
J50	2546471.717	37614386.143	1.07
J51	2546472.562	37614386.797	1.07
J52	2546473.409	37614387.450	1.07
J53	2546474.258	37614388.102	1.07
J54	2546475.108	37614388.752	1.07
J55	2546475.961	37614389.401	0.58
J56	2546476.420	37614389.748	0.19
J57	2546476.575	37614389.863	1.07
J58	2546477.432	37614390.509	

界址点坐标表

点号	X	Y	边长
J58	2546477.432	37614390.509	1.07
J59	2546478.290	37614391.153	1.07
J60	2546479.151	37614391.796	1.07
J61	2546480.013	37614392.437	1.08
J62	2546480.878	37614393.077	1.08
J63	2546481.744	37614393.715	1.08
J64	2546482.613	37614394.352	1.08
J65	2546483.484	37614394.986	1.08
J66	2546484.357	37614395.619	1.08
J67	2546485.232	37614396.250	1.08
J68	2546486.109	37614396.880	1.08
J69	2546486.989	37614397.507	1.08
J70	2546487.870	37614398.133	1.08
J71	2546488.754	37614398.757	1.08
J72	2546489.640	37614399.379	1.08
J73	2546490.528	37614399.999	1.08
J74	2546491.419	37614400.617	1.08
J75	2546492.311	37614401.233	1.09
J76	2546493.206	37614401.848	1.09
J77	2546494.103	37614402.460	

界址点坐标表

点号	X	Y	边长
J77	2546494.103	37614402.460	1.09
J78	2546495.002	37614403.070	1.09
J79	2546495.904	37614403.678	1.09
J80	2546496.807	37614404.284	1.09
J81	2546497.713	37614404.888	1.09
J82	2546498.622	37614405.489	1.09
J83	2546499.532	37614406.089	1.09
J84	2546500.445	37614406.686	1.09
J85	2546501.359	37614407.280	1.09
J86	2546502.275	37614407.872	1.09
J87	2546503.193	37614408.462	1.09
J88	2546504.113	37614409.048	1.09
J89	2546505.034	37614409.632	1.09
J90	2546505.957	37614410.214	1.09
J91	2546506.881	37614410.793	1.09
J92	2546507.807	37614411.369	1.09
J93	2546508.735	37614411.942	1.09
J94	2546509.665	37614412.513	1.09
J95	2546510.596	37614413.081	1.09
J96	2546511.528	37614413.647	

界址点坐标表

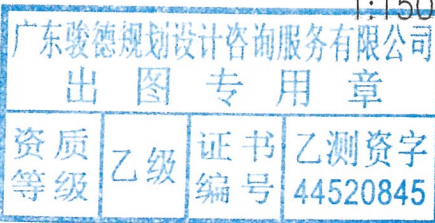
点号	X	Y	边长
J96	2546511.528	37614413.647	1.09
J97	2546512.463	37614414.210	1.09
J98	2546513.398	37614414.770	1.09
J99	2546514.336	37614415.327	1.09
J100	2546515.275	37614415.882	1.09
J101	2546516.216	37614416.434	1.09
J102	2546517.158	37614416.984	0.51
J103	2546517.599	37614417.239	6.93
J1	2546523.001	37614421.586	

S=4681.12 平方米 合7.0217亩

广东骏德规划设计咨询服务有限公司

国家2000大地坐标系
1985国家高程基准,等高距为1米
2007年版图式
2026年3月数字化测制

1:1500



制图者: 彭浚健
审核者: 黄德全